



## **COMMITTEE OF THE WHOLE**

For the **COMMITTEE OF THE WHOLE MEETING** of Council to be held on Monday, April 28, 2025, at 7:00 pm in the Council Chambers of City Hall, 424 – 3<sup>rd</sup> Avenue West, Prince Rupert, B.C.

### **1. CALL TO ORDER**

### **2. ADOPTION OF THE AGENDA**

#### **Recommendation:**

THAT the Agenda for the Committee of the Whole Meeting of Monday, April 28, 2025, be adopted as circulated.

### **3. PRESENTATIONS**

- I. **Presentation from Bob Killbery the Prince Rupert Rotary Club on behalf of the Prince Rupert Interact Club Re: Seal Cove Shelters Proposal.**

### **4. QUESTIONS AND INQUIRIES FROM MEMBERS OF COUNCIL**

### **5. ADJOURNMENT to Regular Council Meeting**

# **Saltwater Marsh Shelter Project**

## **Prince Rupert Rainmakers Interact Club**

Presentation to City Council  
Committee of the Whole  
April 28, 2025

Presenter: Bob Killbery on behalf of:  
Rotary Club of Prince Rupert  
Prince Rupert Rainmakers Interact Club

Presentation: Background on the Interact Club and overview of the proposed project

Request: Permission of Council to proceed with the project

Reason for Request: Proposed project is on City property

**Rainmakers Interact Club:** The Prince Rupert Rainmakers Interact Club is a school-based service club comprised of students at Charles Hays Secondary School. The Club is sponsored by the Rotary Club of Prince Rupert but operates independent of it and are responsible for their own operations. The goal of the Club is to provide service, not only to the school but also to the community and causes around the world. This is the Club's 6<sup>th</sup> year of operation during which it has supported a number of school and community initiatives. Last year alone, the Club raised \$12,000 to support the fine arts programs in SD52, raised \$1,200 to purchase a shelter box to aid in disaster relief, donated \$1,000 to an orphanage in Africa and volunteered throughout the community.

**About the project:** The project involves the installation of roofs over the existing picnic tables situated on the south side of the saltwater marsh in the Seal Cove area. Each of the 6 picnic tables will have its own roof structure. (see aerial of project area – page 4)

Each of the shelters will have a shed style roof (see the sketch – page 5) with the lower edge facing towards Yaga. The roof will have open rafters (no fascia board or gutters). The shelters will be constructed with 6x6 cedar posts and beams with 2x8 pressure-treated rafters. The roof will be made of clear Suntuf polycarbonate panels. The shelter posts will be mounted on concrete piers tied to concrete footings. (see technical drawings – pages 6-8).

**Project rationale:** With over 2500 millimeters of rain annually, it is surprising that Prince Rupert has virtually no covered recreational areas in its parks or public areas. This project seeks to address this issue by providing roofs over the 6 picnic tables located at the saltwater marsh. This area was selected as it had existing assets (wooden picnic tables/benches) which would benefit from protection from the elements and a high volume of visitors, both local and tourist. Its location, near the water, proximity to the Rushbrook Trail, with a variety of marine birds and animals, makes it attractive regardless of the weather. It will be infinitely more attractive and appreciated by all users if existing amenities, such as the picnic tables, were made more usable by providing roofs over them.

The proposed construction materials were chosen for a number of reasons:

- Virtually all existing structures in the marsh area are wooden, including the picnic tables, benches, fencing and information signposts.
- A wooden structure is more esthetically pleasing given the natural setting of the marsh area.
- Cedar has traditionally been used for building outdoors on the north coast and with a little maintenance has proven to be resilient to our environment. It is our

intention to seal the posts and beams with Cetol to reduce maintenance and increase durability.

- Using wood provides an opportunity to engage the students at CHSS in the preparation of non-technical components as well as the finishing of posts and beams.
- Clear polycarbonate roof panels are lightweight, easily maintained and would allow natural light to enter the picnic table area. Having natural light available, even on a cloudy/rainy day, would make the picnic tables more attractive for use.

The cost of this project is estimated at \$86,000 and the Interact Club has already secured a significant amount of funding to advance it. Should the project be approved construction would not commence until the fall of 2025. All on site construction will be conducted by certified construction professionals.

**Request:** That City Staff be directed to work on the proposed project with the Rainmakers Interact Club to bring it to fruition.



025-537-695  
BBCP2448  
REMPARCELA

010-000-828  
PRP6331  
REMLot 1

Project  
Area

BELLIS RD

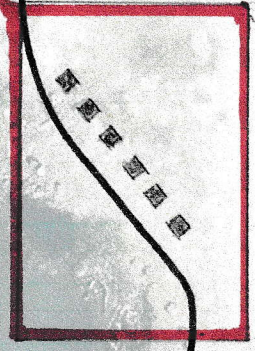
SEAL COVER RD

011-174-757  
PRP4693  
REMLote

014-701-847  
PRP12425  
LOT 2

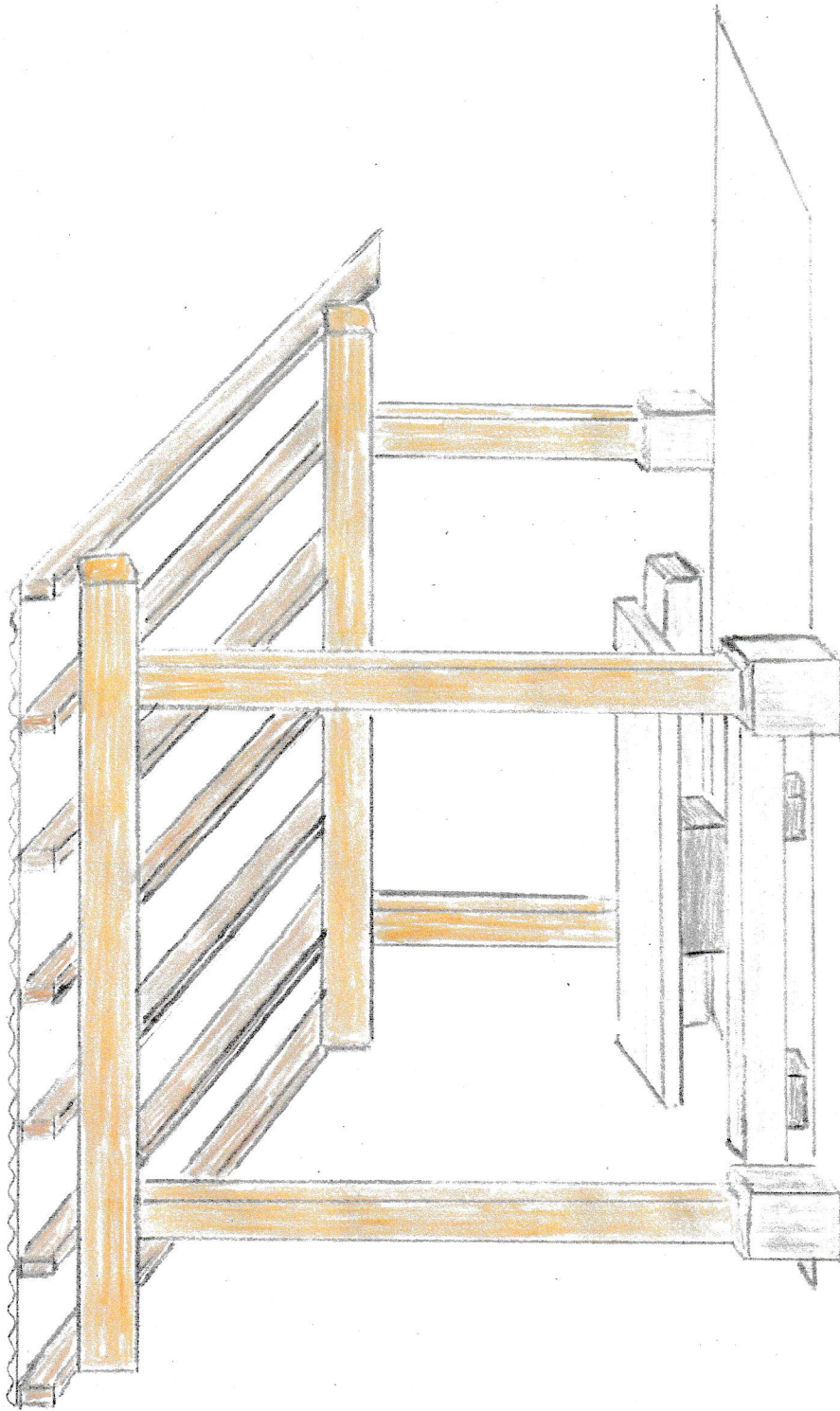
005-782-660  
PRP9890  
REMLot 1

014-701-821  
PRP12425  
LOT 1



4

4

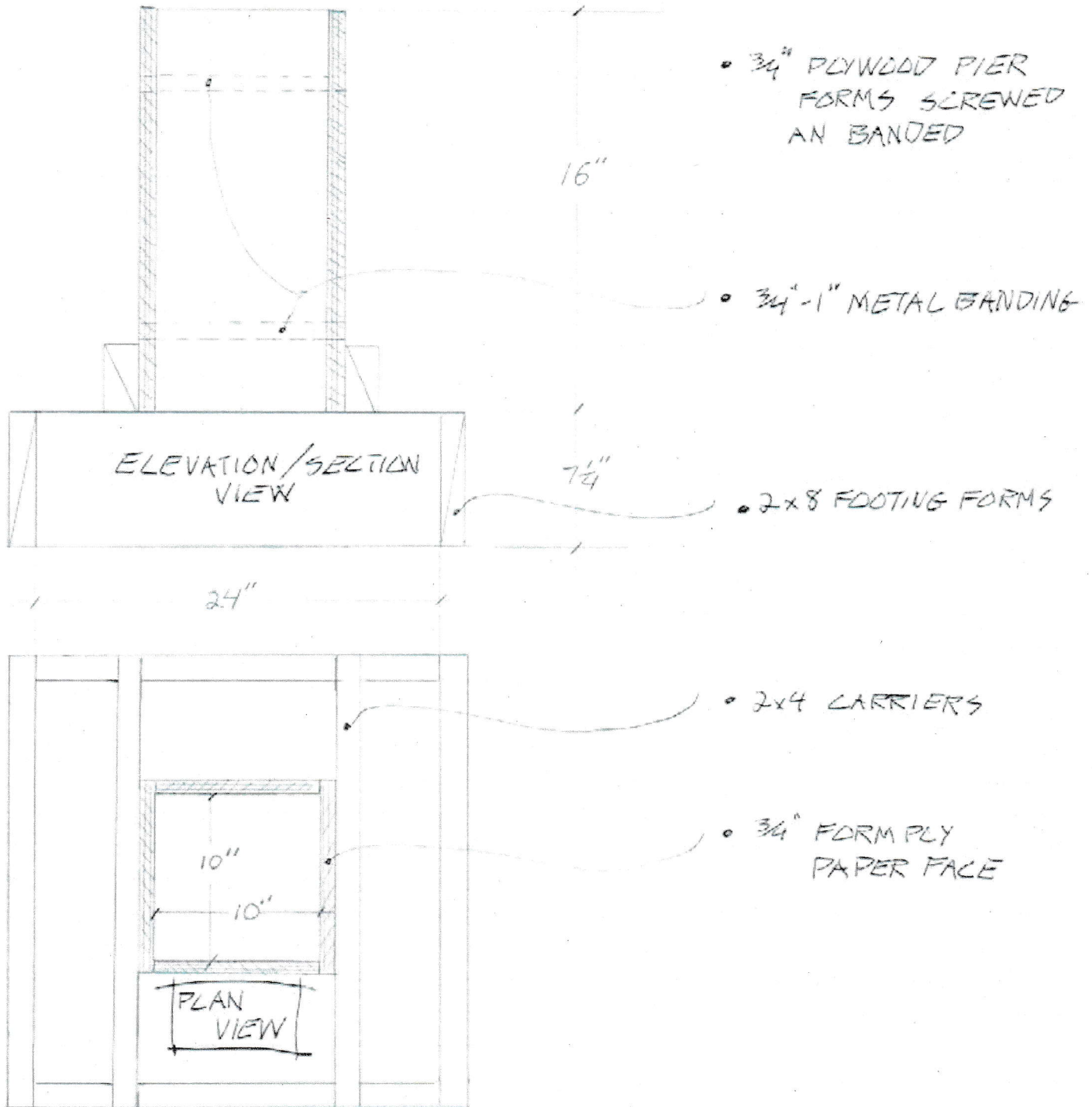


not to scale

5

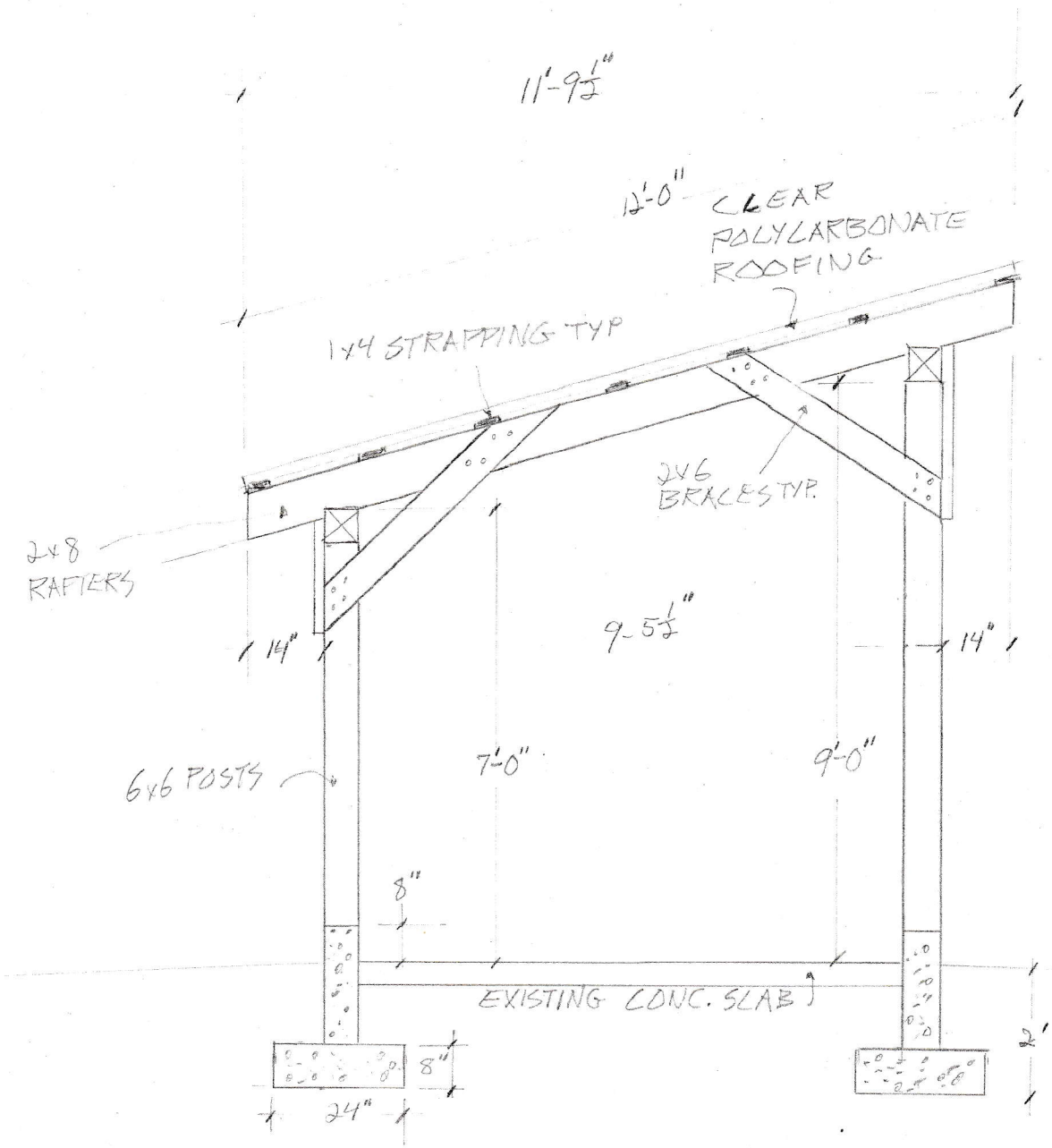
5

MONOLITHIC FOOTINGS + PIERS

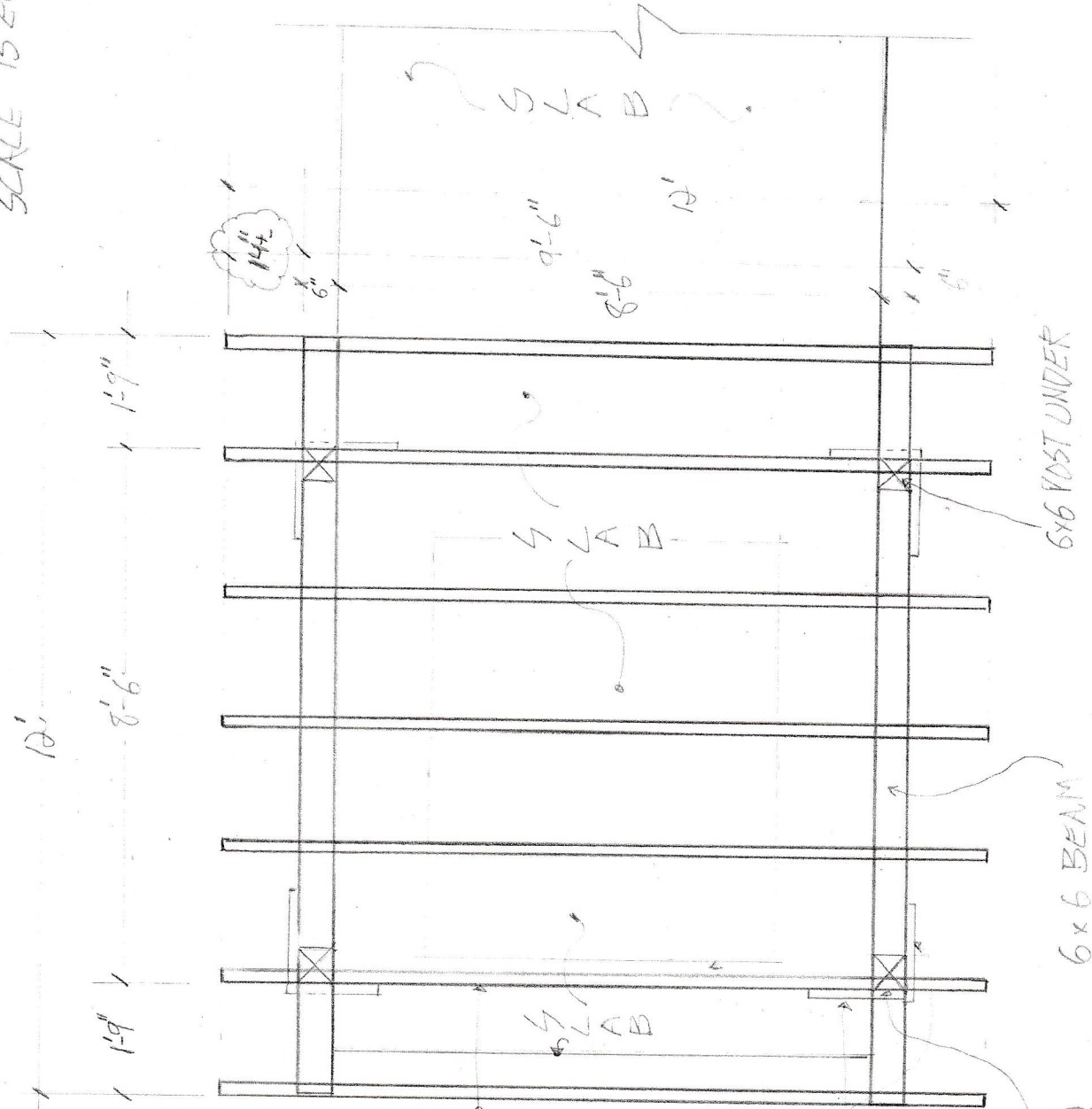


SALT MARSH - PICNIC TABLE  
ROOF

SCALE IS 3/12



FALL 17/17/17  
 ROOF PLAN  
 SCALE IS EQUAL TO 3/8" = 1'



ROOF STRAPINGS  
 + SUNTILE LEFT  
 OUT FOR CLARITY

2x8  
 RAFTERS  
 TYP  
 31' O.C.

OUTLINE  
 OF EXISTING  
 PICKUP BENCH

2x6  
 CROSS  
 BRACING

FACE OF  
 RAFTER MUST  
 LINE UP WITH  
 FACE OF POST  
 TYP