



HIGHWAY ROAD CLOSURE BYLAW NO. 3555, 2025

BEING A BYLAW TO CLOSE A PORTION OF HIGHWAY ALLOWANCE

Pursuant to Section 40 of the *Community Charter*, Prince Rupert City Council may, by bylaw, close a portion of a highway to traffic and remove the dedication of the highway, if prior to adopting the bylaw, Council publishes notices of its intention in a newspaper and provides an opportunity for persons who consider they are affected by the bylaw to make representations to Council.

The Council of the City of Prince Rupert deems that it is in the public interest to close to traffic, remove the dedication of highway comprising of approximately 278.361 sqm of dedicated Highway on Plan 923, which is shown outlined in bold black on the reference plans EPP142596 prepared by McElhanney, a reduced copy of which is attached hereto (*the "Road Closure Plan"*);

The City intends to close that portion of highway to sell for consolidation with a neighbouring lot.

Notices of Council's intention to close that portion of highway to traffic, to remove its dedication as highway, and published in a newspaper and posted in the public notice posting place, and the Council has provided an opportunity for persons who consider they are affected by the closure and disposition to make representations to Council; and

The Council of the City of Prince Rupert does not consider that the closure of the Closed Road will affect the transmission or distribution facilities or works of utility operators;

The Council of the City of Prince Rupert, in an Open meeting assembled, enacts as follows:

1. Attached to this Bylaw as Schedule "A" and forming part of this Bylaw is a reduced copy of the explanatory plan of highway closure (*the "Road Closure Plan"*).
2. The City hereby authorizes the closure to traffic and removal of highway dedication of the 278.361 sqm portion of highway which was dedicated as

highway at the New Westminster Land Title Office by Plan 923, outlined in Bold on the Road Closure Plan (the “Closed Road”).

3. On deposit of the Road Closure Plan and all other documentation for the closure of the road allowance in the New Westminster Land Title Office, the Closed Road is closed to public traffic, it shall cease to be public highway, and its dedication as a highway is cancelled.
4. The Mayor and Corporate Administrator are authorized to execute all deeds of land, plans and other documentation necessary to affect this road closure and disposition.
5. This Bylaw may be cited as **“HIGHWAY CLOSURE BYLAW NO. 3555, 2025”**

READ A FIRST TIME this 10th day of February, 2025.

READ A SECOND TIME this 10th day of February, 2025.

PUBLIC NOTIFICATION this 14th day of February, 2025.

READ A THIRD TIME this 10th day of March, 2025.

MINISTRY OF TRANSPORTATION APPROVAL this 7th day of March, 2025 (APPROVAL NO. _____).

FOURTH & FINAL READING this 10th day of March, 2025.

Mayor

Corporate Administrator

This Bylaw was adopted by Council.

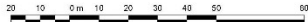
To view the signed original,
contact City Hall Administration at
(250) 627 0934 or email
cityhall@princerupert.ca

SCHEDULE "A" – ROAD CLOSURE PLAN BYLAW NO. 3555, 2025

**REFERENCE PLAN TO ACCOMPANY BY-LAW No. 3555
(PRINCE RUPERT) CLOSING PORTION OF LANE SHOWN
DEDICATED ON SECTION 5, PLAN 923, DISTRICT LOT 251,
RANGE 5 COAST DISTRICT**

PLAN EPP142596

PURSUANT TO SECTION 120 OF THE LAND TITLE ACT AND
SECTION 40 OF THE COMMUNITY CHARTER
BCGS 103J.039



ALL DISTANCES ARE IN METRES AND DECIMALS THEREOF

THE INTENDED PLOT SIZE OF THIS PLAN IS 432 mm IN WIDTH BY 560 mm IN HEIGHT
(C-SIZES) WHEN PLOTTED AT A SCALE OF 1:1000.

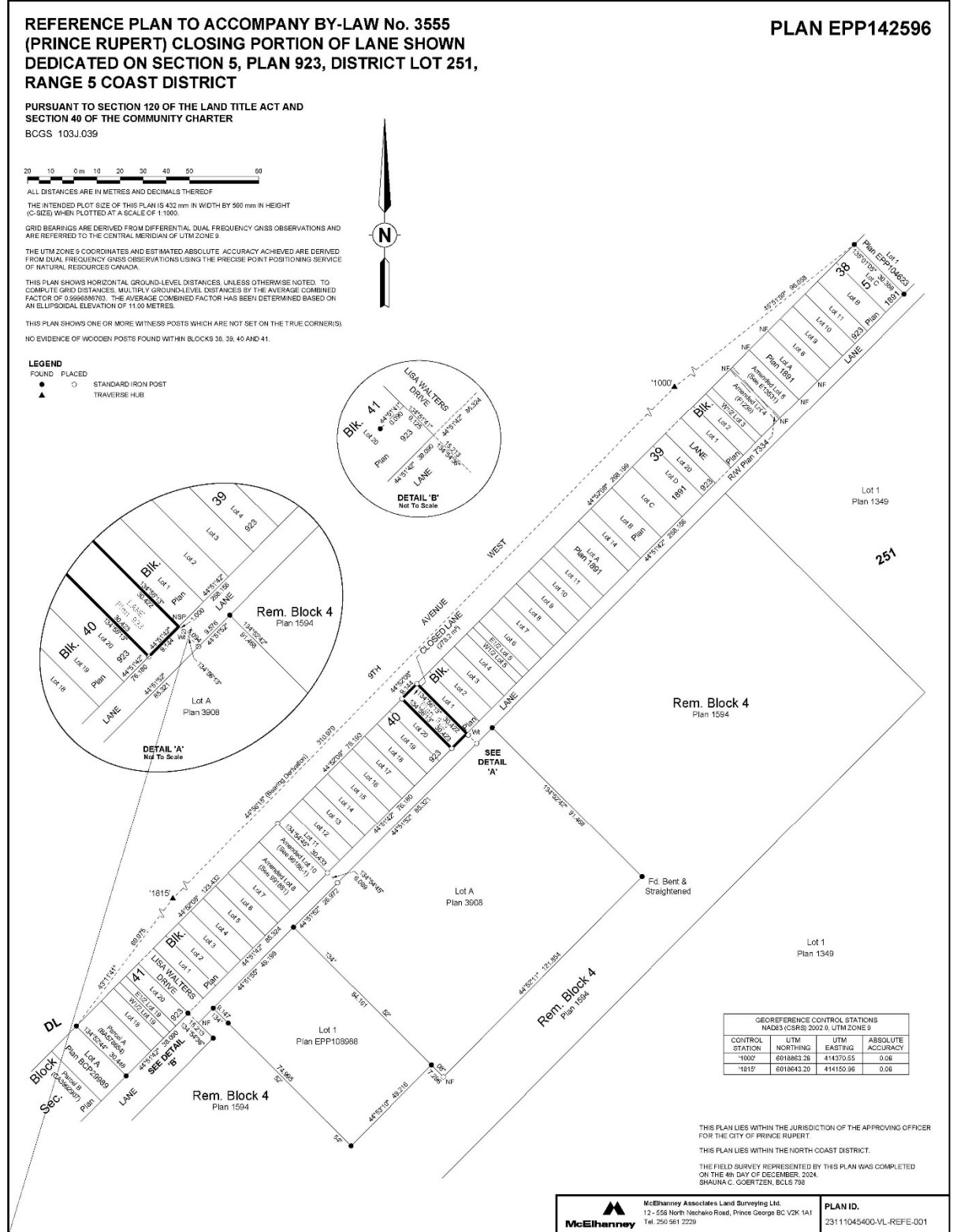
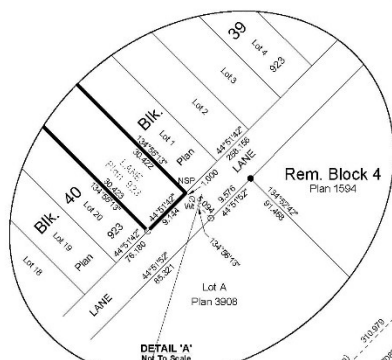
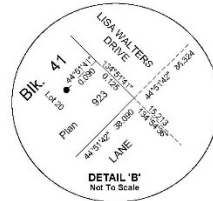
GRID BEARINGS ARE DERIVED FROM DIFFERENTIAL DUAL FREQUENCY GNSS OBSERVATIONS AND
ARE REFERRED TO THE CENTRAL MERIDIAN OF UTM ZONE 9

THE UTM ZONE 9 COORDINATES AND ESTIMATED ABSOLUTE ACCURACY ACHIEVED ARE DERIVED
FROM DUAL FREQUENCY GNSS OBSERVATIONS USING THE PRECISE POINT POSITIONING SERVICE
OF NATURAL RESOURCES CANADA.

THIS PLAN SHOWS HORIZONTAL GROUND-LEVEL DISTANCES, UNLESS OTHERWISE NOTED, TO
COMPLETE GRID DISTANCES. MULTIPLY GROUND-LEVEL DISTANCES BY THE AVERAGE COMBINED
FACTOR OF 0.999998763. THE AVERAGE COMBINED FACTOR HAS BEEN DETERMINED BASED ON
AN ELLIPSOIDAL ELEVATION OF 11.00 METRES.

THIS PLAN SHOWS ONE OR MORE WITNESS POSTS WHICH ARE NOT SET ON THE TRUE CORNER(S).
NO EVIDENCE OF WOODEN POSTS FOUND WITHIN BLOCKS 36, 38, 40 AND 41.

LEGEND
FOUND PLACED
● ○ STANDARD IRON POST
▲ ▽ TRAVERSE HUB



GEOREFERENCE CONTROL STATIONS NAD83 (CSRS) 2002.0, UTM ZONE 9			
CONTROL STATION	UTM NORTHING	UTM EASTING	ABSOLUTE ACCURACY
'100'	691863.26	414370.55	0.06
'181'	6918643.20	414150.36	0.06

THIS PLAN LIES WITHIN THE JURISDICTION OF THE APPROVING OFFICER FOR THE CITY OF PRINCE RUPERT.

THIS PLAN LIES WITHIN THE NORTH COAST DISTRICT.

THE FIELD SURVEY REPRESENTED BY THIS PLAN WAS COMPLETED ON THE 4th DAY OF DECEMBER, 2024.
SHARNA C. COERTZEN, B.C.S. 198

McElhanney Associates Land Surveying Ltd.
12 - 556 North Nechako Road, Prince George BC V2K 1A1
Tel. 250-561 2229

PLAN ID.
23111045400-VL-REFE-001